

Introduction Document

Instant Bolero line



To: JDE MSU's

From: Brenda van der Linden – Project Delivery Specialist Professional
Stefania Charlemont - Global Category Specialist Instant Coffee
John Verdam – Equipment Performance Specialist Professional
Geronimo Edwards – Global Supply Chain Specialist Professional
Naomi Toure – Product Marketing Specialist Professional NL

Content

Content.....	2
1 Introduction Instant Bolero Line.....	3
2 Concept information	4
2.1 Variants	4
2.2 USP's	4
2.3 Canisters and drinks	5
2.4 Pots	6
2.5 Differences	6
3 Versions, Kits & Options	8
3.1 Machine	8
3.2 Additional features.....	8
3.3 Branding elements	8
4 Graphical User Interface.....	9
4.1 Touch screen	9
4.2 Drink customization.....	10
4.3 Energy saving mode.....	10
4.4 Connectivity	10
4.5 Payment.....	10
5 Phase in – Phase out.....	11
5.1 Replacing machines	11
5.2 Phase-in process.....	11
6 Technical Data Sheet	12
7 Service Aspects	13
7.1 Training	13
7.2 Documentation.....	13
7.3 Expected service numbers.....	13
7.4 Cleaning.....	13
8 Packaging and specifications	15
9 Contact persons.....	16

1 Introduction Instant Bolero Line

This document is written to support the launch of various versions of the Instant Bolero. This Instant line is developed by one of our suppliers and minor changes have been made to the design and functionalities to create a better fit with the JDE organization. The introduction document explains the specific JDE SKU ranging from 2 to 4 canisters, incl. design, pricing, logistics, kits & options. The goal of the Instant Bolero line is to succeed the previous instant machines in JDE Professional portfolio.

2 Concept information

2.1 Variants

The Instant Bolero will come in 3 variants: 1) With 2 instant canisters, 2) With 3 instant canisters and 3) With 4 instant canisters.

Bolero Pico Latte Touch: If you choose two canisters, you can insert instant coffee and topping (milk powder) to serve other coffee specialties such as cappuccinos and lattes. However, please note that only 3 beverages can be displayed on the menu.

Bolero Bravo Touch & Bolero Ultimo Touch: Would you like to expand the range of beverages? Then opt for the wide model. This model is available with three and four canisters offering a wider range of hot drinks.

One of the canisters can be used for instant coffee, of course. The others allow you to add milk or cacao to serve – for example – cappuccino, café au lait, moccachino or hot chocolate. The choice between three or four canisters often depends on the variety of beverages you would like to offer to your customers.

	Bolero Pico Latte Touch	Bolero Bravo Touch	Bolero Ultimo Touch	Comments
Type of ingredients	Instant	Instant	Instant	
Number of drinks	3 + hot water	Max 4 x 9	Max 4 x 9	
Canisters	2	3	4	
Mixers	1	2	3	
Dispense time espresso	~12 seconds	~14 seconds	~14 seconds	
Dispense time coffee	~14 seconds	~16 seconds	~16 seconds	*based on a cup of 125ml and depending on settings
Dispense time cappuccino	~14 seconds	~17 seconds	~17 seconds	*based on a cup of 125ml and depending on settings
Dispense time hot water	~5 seconds	~14 seconds	~14 seconds	*based on a cup of 125ml and depending on settings
Advised capacity	5-20 users 5000 – 20.000 cups per year	10-30 users 10.000 – 30.000 cups per year	10-30 users 10.000 – 30.000 cups per year	*based on a cup of 125ml and depending on settings

2.2 USP's

Key product benefit:

The new Instant Bolero line consists of handy, fast, hassle free and versatile machines. The machines come in three versions (2, 3 and 4 cannisters), offering a wide range of different types of drinks (depending on the instant ingredient combinations). The aesthetics and user interface has significantly improved, where the proven technology has changed little. Moreover, the new line-up has the main functionalities for our connected services capability.

Key product attributes:

- Ownable JDEP look and feel.
- Full-colour touchscreen.
- Proven technology.
- Made from solid and high quality materials, such as stainless steel and BPA-free plastics.
- Bravilor Bonamat patented mixing systems reduce the build-up of instant ingredients considerably.

All marketing materials for the Bolero Instant line are created by Global Marketing team and can be found on Pulse: <https://havaspulse.com/v2/search/mine> or by contacting Stefania Charlemont.

2.3 Canisters and drinks

Bolero Pico Latte Touch configuration



Standard Set-up	
Coffee	1.3 L
Milk product	1.3 L

Alternative Set-up	
Coffee	1.3 L
Chocolate	1.3 L

Alternative Set-up	
Coffee	1.3 L
Coffee	1.3 L

Bolero Bravo Touch configuration



Standard Set-up*	
Coffee	3.2 L
Milk product	1.3 L
Chocolate	1.3 L

Bolero Ultimo Touch configuration



Standard Set-up*	
Coffee	1.3 L
Milk product	1.3 L
Chocolate	1.3 L
Sugar	1.3 L

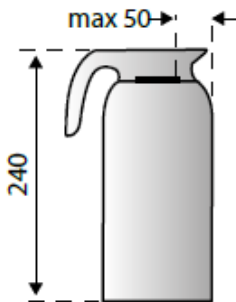
Standard Set-up	
Coffee	1.3 L
Coffee Decaf	1.3 L
Milk	1.3 L
Chocolate	1.3 L

*Final order of ingredients per canister to be decided via standard configuration files. Check <http://www.jacobsdouweegbertsprofessional.support>

A clone file including the GUI and recipes for the above set-ups will be available via JDE support and governed by Operations International. All drinks will be made for 125ml, representing the cups that are next to the machine. Other files can be created locally, but please note that governance is then also locally. The files that will be made available can be found on the **JDE support web page**.

2.4 Pots

For all versions there is a extender available enabling the use of pots. Please note that the size between the splash panel and the outlet is limited, allowing only for certain pots to be used.



2.5 Differences

Difference compared to the predecessors

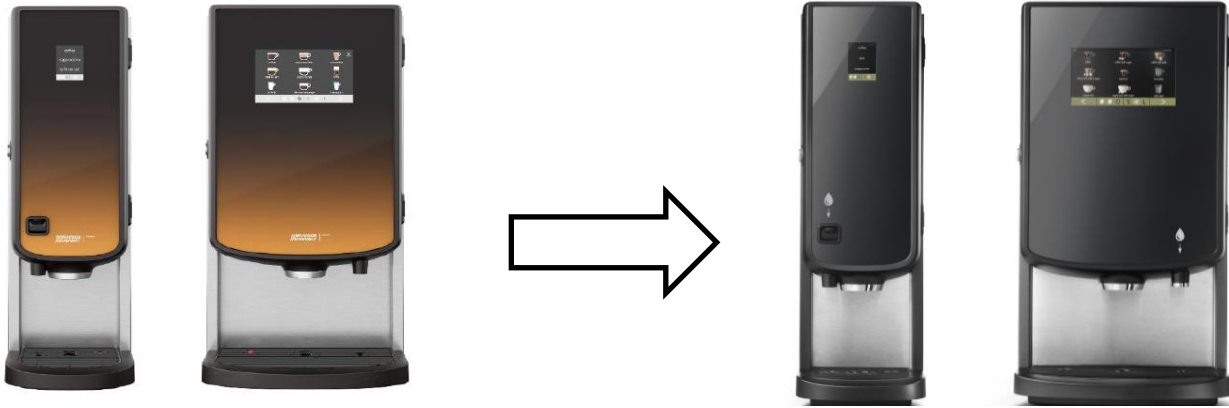


Above pictures shows the aesthetical and USP-related differences between the new instant line-up and their predecessors.

- All machines have been upgraded to a touchscreen
- The touchscreen also allows for more drink personalisation, such as strength and volume adjustment
- The Pico Latte Touch has 2 canisters instead of its predecessor the Pico
- Bravo Touch and Ultimo Touch have the same outer case
- The hot water outlet is in all models of the new line-up separate
- Prepared for connectivity when ordering the MDB extension kit
- Payment options will be available in a later stage

- Bravo Touch and Ultimo Touch are prepared for cold water unit when ordering the cold water cable

Differences compared to the standard variant of the supplier



Above pictures shows the aesthetical and USP-related differences between the JDE variant and the standard variant of the supplier.

- 2 holes as guidance where to place the JDE branding elements
- JDEP branded user interface (background, screensaver, drinks icons)
- Improved design based on JDEP design guidelines; Note that this is printed on the back of the front panel and is not interchangeable.

3 Versions, Kits & Options

Below the overview of article codes, machines versions, branding, kits, options

3.1 Machine

<i>New JDE Portfolio (new codes)</i>			
<i>Type</i>	<i>Supplier #</i>	<i>JDE SAP #</i>	<i>SKU description</i>
<i>Bolero Pico Latte Touch</i>	802.034.031.021	64102220	BOLERO 21 JDE (PICO LATTE TOUCH)
<i>Bolero Bravo Touch</i>	802.035.031.021	64102230	BOLERO 32 JDE (BRAVO TOUCH)
<i>Bolero Ultimo Touch</i>	802.036.031.021	64102206	BOLERO 43 JDE (ULTIMO TOUCH)


3.2 Additional features

<i>JDE Portfolio</i>				
<i>Type</i>	<i>Supplier #</i>	<i>JDE SAP #</i>	<i>SKU description</i>	<i>Comment</i>
<i>Pot extension Pico Latte Touch</i>	7.270.125.101	55123918	PEDESTAL BOLERO 1/2	For higher outlet/jugs
<i>Pot extension Bravo Touch / Ultimo Touch</i>	7.270.214.101	55123919	PEDESTAL BOLERO 3/4	For higher outlet/jugs
<i>Cold water unit cable</i>	VW0005	55123466	CW CABLE BB 48 (XH TO MOLEX) 2M	Only for Bravo/Ultimo, to connect van West cold water unit.
<i>Extended PCB board</i>	7.270.124.101	55123914	SERVICE SET MDB BOLERO	Needed for connectivity/payment
<i>Flojet</i>	7.270.103.101	55060361	FLOJET	Without tank
<i>Flojet + additional tanks</i>	-	55060360	FLOJET + 2 TANK	Incl 2x 18 litre water bottle
<i>Pumpset</i>	7.270.701.101	55113888	PUMPSET	Without tank
<i>Fan hood</i>	7.270.631.101	55123752	FAN HOOD	Additional cap on fan to guide air flow backwards or downwards

On <http://www.jacobsdouweegbertsprofessional.support> a part book with all the specific JDE spare parts numbers can be found.

3.3 Branding elements

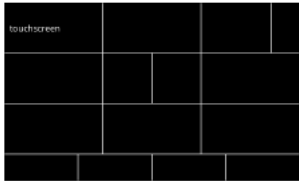
The machines are prepared with 2 holes to place the branding logo's. These items need to be ordered separately with the machine

Branding logo DE	6161039	55114872	
Branding logo DE - square	6161193	55115776	
Branding logo Jacobs	6161245 6161264	55117131 55118381	
Branding logo Gevalia	6161227	55116803	

4 Graphical User Interface

4.1 Touch screen

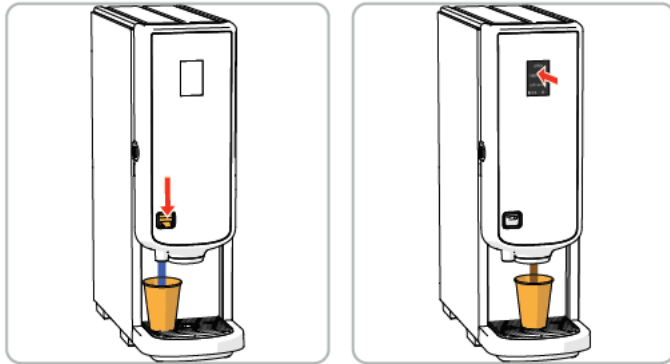
One of the main new features of the Instant Bolero Touch line is the drink selection by the consumer. All models are equipped with an LCD screen with capacitive overlay. See below an example how the screen is divided for the Bolero Bravo Touch and the Bolero Ultimo touch. If the buttons are not pressed for a certain period, a screensaver will be shown.



Bolero Pico Latte Touch

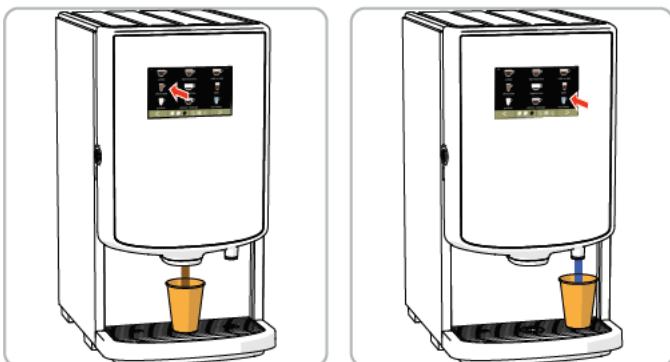
The Bolero Pico Latte Touch has a small touchscreen which only displays the drink names. The language is determined during the installation of the machine and therefore cannot be adjusted when the machine is in use.

Note that the hot water outlet is separate, and not managed via the touchscreen.



Bolero Bravo Touch and Bolero Ultimo Touch

The touch screen of the wider models is bigger and therefore allows for displaying both the drink names as well as the drink icons. The hot water is also managed via the main touch screen, even though the outlet is separate. Also here the language is determined during machine set-up.



4.2 Drink customization

If you press on the button of the beverage, preparation starts immediately. The touchscreens allow for pre-selections of the drink such as strength and volume adjustments. If an end user would like to make use of the pre-selection option, they can use the buttons at the bottom of the screen before selecting the drink. The pre-selections are only captured for the next drink and return afterwards to the middle setting.



Options

Strength:

- press the beans (carousel) to select the beverage strength



Cup size:

the letters (S=small / M=medium / L=large) represents the three steps in volume

- press the 'letters' (carousel) to select the beverage cup size

4.3 Energy saving mode

The devices are equipped with an energy saving mode (ECO) to save energy consumption when the machine is not used. (e.g. overnight or during a weekend). The settings can be changed via the technical menu.

4.4 Connectivity

The machine is equipped with EVA-DTS information which can be reached by telemetry devices, for example the Vianet telemetry-unit. For the standard clone files, the planogram mapping for consumptions will be created and maintained by the global Equipment Operations department. When deviating from the standard recipe files and offering connectivity solutions, please reach out to local marketing and if approved, also request for the specific planogram.

On JDE support a document is stored explaining how to install the extended PCB board, required for connectivity.

4.5 Payment

The machine is developed for MDB payment systems, however the functionality will not be available directly at launch. No dedicated side modules are available for this machine within JDE.

On JDE support a document is stored explaining how to install the extended PCB board, required for payment.

5 Phase in – Phase out

5.1 Replacing machines

See below the overview of the changes in the global portfolio and the expected phase out. Local decisions regarding the local portfolio, might deviate from this.

Bravilor naming	JDE naming	SAP number		
Bolero 1	Pico	64271172	→	Bolero Pico Latte Touch
Bolero 2	Pico Latte	-		
Quinto	Bravo	64271183	→	Bolero Bravo Touch
Bolero XL	Ultimo	64270992	→	Bolero Ultimo Touch

To maintain a value machine longer in the portfolio, the Bravo button version is not directly delisted when its successor becomes available. However, this will be reviewed on a continuous based and will be inevitable when volumes drop below 250 per year.

5.2 Phase-in process

Countries who had the previous instant machines have been contacted during the project and below are the introduction dates. Other MSU's interested in the Instant Bolero line need to provide a listing request to determine the best introduction date.

<i>Introduction dates</i>				
Versions & Kits	Q1 2021	Q2 2021	Q3 2021	Q4 2021
Bolero Pico Latte Touch		NL, BE, GE		
Bolero Bravo Touch		NL, BE, DK		
Bolero Ultimo Touch	NL tender	NE, BE, AUS*, NZ*		

*Australia and New Zealand route to market still under discussion due to local certification regulations. This might impact the exact introduction date, also knowing the longer lead time towards this area in the world.

6 Technical Data Sheet

	<i>Bolero Pico Latte Touch</i>	<i>Bolero Bravo Touch</i>	<i>Bolero Ultimo Touch</i>
SAP number	64102220	64102230	64102206
Users	5-20	10-30	10-30
Max number of beverages	3 + hot water	4 x 9	4 x 9
Capacity Instant canister	2x 1.3L	1x 3.2L + 2x 1.3L	4x 1.3L
Boiler capacity		2.3L	2.3L
Waste water bucket capacity (drip tray)	500 ml	1000 ml	1000 ml
Height	592mm	592mm	592mm
Width	190mm	318mm	318mm
Depth	441mm	441mm	441mm
Required dimensions (HxWxD)	920x389x520	920x517x520	920x517x520
Table top	Yes	Yes	Yes
Weight empty	11,1	16,3	16,3
Rated power	230/240 V~ 50/60 Hz 2230W	230/240 V~ 50/60 Hz 2230W	230/240 V~ 50/60 Hz 2230W
Hour capacity	30 L (240 cups)	30 L (240 cups)	30 L (240 cups)
Power plug	EU	EU	EU
Energy label	TBD	TBD	TBD
Water supply	Fixed, 3/4 inch	Fixed, 3/4 inch	Fixed, 3/4 inch
Ambient temperature	0-40°C	0-40°C	0-40°C
Noise level	<70 dB(A)	<70 dB(A)	<70 dB(A)

The recycling sheet of all versions will be posted on the JDE support page when available.

7 Service Aspects

7.1 Training

Training will be provided by the International Trainers. If you are interested please reach out to the international training team. If people are experienced with the predecessor models, only a e-learning software trainings is required.

7.2 Documentation

All service related (updated) documentation, will be added to the <http://www.jacobsdouweegbertsprofessional.support> site, e.g.

- Spare part list
- User/Operator manual
- Service information's
- Kit instructions
- (Advised) dosing cards
- Drinks/recipes menu
- Button layout

The machines will be delivered with a multilingual Quick Start paper with a QR code referring to the digital version of the English manual.

7.3 Expected service numbers

Based on average of 5 years, depending on service approach and water treatment policy:

	<i>Expected service numbers</i>		
	<i>Bolero Pico Latte Touch</i>	<i>Bolero Bravo Touch</i>	<i>Bolero Ultimo Touch</i>
Visit Rate	1.01 (1 st year: 1.5)	1.2 (1 st year 1.7)	1.28 (1 st year: 2)
CM-rate	0.8	0.96	1.02
Annual Spare Part Costs	€13	€17	€18
Mean time to visit	50 min	51 min	52 min

7.4 Cleaning



scan QR code | scan QR-code | QR-Code scannen | scanner code QR | skann QR-koden | skanna QR-kod | scansione codice QR | escanear código QR | zeskanuj kod QR



8 Packaging and specifications

	<i>Logistic Data SAP</i>		
	<i>Bolero Pico Latte Touch</i>	<i>Bolero Bravo Touch</i>	<i>Bolero Ultimo Touch</i>
Length (in mm)	580	500	500
Width (in mm)	309	404	404
Height (in mm)	780	780	780
Gross weight (Kgs)	12,7	18,5	18,7
Netto weight (Kgs)	11,1	16,3	16,3
Qty per Pallet	12	12	12
Number of layers	2	2	2
Qty per layer	6	6	6
LxBXH Pallet (mm)	1200 x 1000 x 1760	1200 x 1000 x 1760	1200 x 1000 x 1760

9 Contact persons

Persons	Responsibilities	Email
Brenda van der Linden	Project Delivery Specialist Professional	Brenda.vanderLinden@JDEcoffee.com
Stefania Charlemont	Global Cat Specialist Instant Coffee	Stefania.Charlemont@JDEcoffee.com
John Verdam	Equipment Performance Specialist Professional	John.Verdam@JDEcoffee.com
Geronimo Edwards	Supply Chain Planning Specialist (SC - Purchasing)	Geronimo.Edwards@JDEcoffee.com
Naomi Toure	Product Marketing Specialist Professional NL	Naomi.Toure@JDEcoffee.com
Annemieke Honig	Product Marketing Specialist Professional NL	Annemieke.Honig@jdecoffee.com